

BM-SERIES COAXIAL

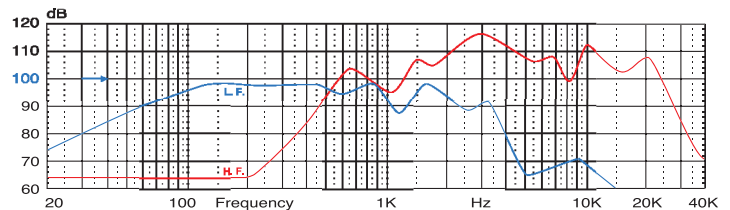
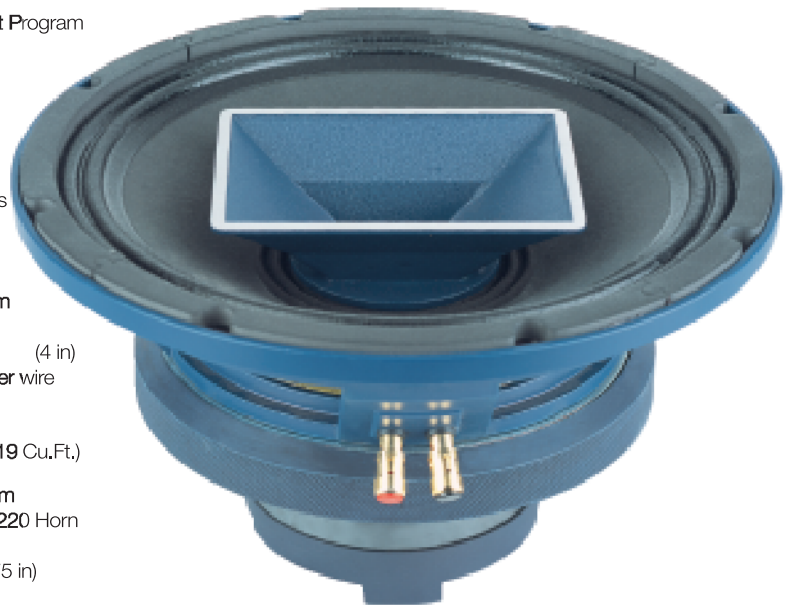
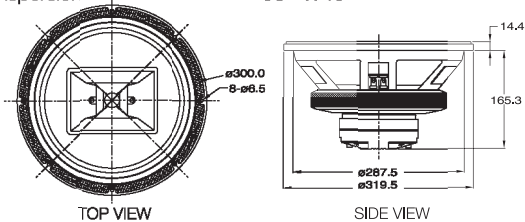
BM-12CXHC COAXIAL TRANSDUCER

GENERAL SPECIFICATIONS

| | | | |
|------------------------------|---------------------------------------|-----------------|---------|
| Nominal Diameter | : 305 | mm | (12 in) |
| Nominal Impedance | : 4~8 | ohm | |
| Power Capacity (RMS) | : 300~600W | Cont Program | |
| Sensitivity 1W/1M | : 98 | dB | |
| Resonant Frequency | Fs : 53 | Hz | |
| Impedance | Re : 6 | ohm | |
| Electromagnetic Q | Qes : 0.32 | | |
| Mechanical Q | Qms : 5.45 | | |
| Total Q | Qts : 0.30 | | |
| Compliance Equivalent Volume | VAS : 39 | Liters | |
| Surface Area of Cone | Sd : 510 | cm ² | |
| Reference Efficiency | η_o : 1.71 | % | |
| Voice Coil Overhang | Xmax : 5 | mm | |
| Diaphragm Mass inc Airload | Mms : 85.38 | Gram | |
| Bl Product | BL : 22.62 | TM | |
| Voice Coil Diameter | : 99.3 | mm | (4 in) |
| Voice Coil Material | : Edge wound copper wire | | |
| Gross Weight | 13.26 Kg (29.1Lb) | | |
| Packing Dimension WxLxH (mm) | 365 X 365 X 250 | | |
| | 14.3in X 14.3in X 9.8in (0.19 Cu.Ft.) | | |

HF UNIT

| | | | |
|----------------------|-------------|--------------------|-----------|
| Power Capacity (RMS) | : 40/80W | Cont Program | |
| Sensitivity 1W/1M | : 106 | dB on PH-3220 Horn | |
| Frequency Range | : 1.5K~18K | Hz | |
| Voice Coil Diameter | : 44.4 | mm | (1.75 in) |
| Diaphragm Material | : Titanium | | |
| Dispersion Pattern | : 90° x 40° | | |



BM-12CXHB COAXIAL TRANSDUCER

GENERAL SPECIFICATIONS

| | | | |
|------------------------------|---------------------------------------|-----------------|---------|
| Nominal Diameter | : 305 | mm | (12 in) |
| Nominal Impedance | : 4~8 | ohm | |
| Power Capacity (RMS) | : 300~600W | Cont Program | |
| Sensitivity 1W/1M | : 100 | dB | |
| Resonant Frequency | Fs : 55 | Hz | |
| Impedance | Re : 5.6 | ohm | |
| Electromagnetic Q | Qes : 0.24 | | |
| Mechanical Q | Qms : 7.33 | | |
| Total Q | Qts : 0.23 | | |
| Compliance Equivalent Volume | VAS : 54.2 | Liters | |
| Surface Area of Cone | Sd : 530 | cm ² | |
| Reference Efficiency | η_o : 3.82 | % | |
| Voice Coil Overhang | Xmax : 2.50 | mm | |
| Diaphragm Mass inc Airload | Mms : 60.62 | Gram | |
| Bl Product | BL : 22.5 | TM | |
| Voice Coil Diameter | : 76.2 | mm | (3 in) |
| Voice Coil Material | : Edge wound copper wire | | |
| Gross Weight | 11.2 Kg (24.6Lb) | | |
| Packing Dimension WxLxH (mm) | 365 X 365 X 250 | | |
| | 14.3in X 14.3in X 9.8in (0.19 Cu.Ft.) | | |

HF UNIT

| | | | |
|----------------------|-------------|--------------------|-----------|
| Power Capacity (RMS) | : 40/80W | Cont Program | |
| Sensitivity 1W/1M | : 106 | dB on PH-3220 Horn | |
| Frequency Range | : 1.5K~18K | Hz | |
| Voice Coil Diameter | : 44.4 | mm | (1.75 in) |
| Diaphragm Material | : Titanium | | |
| Dispersion Pattern | : 90° x 40° | | |

