

PHT-415

HIGH FREQUENCY SUPER TWEETER

GENERAL SPECIFICATIONS

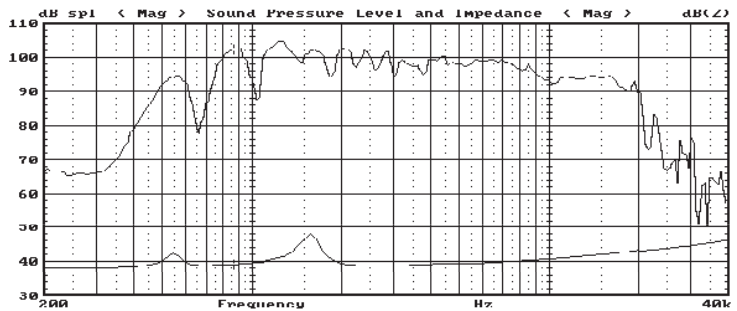
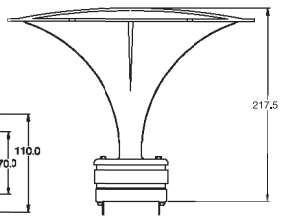
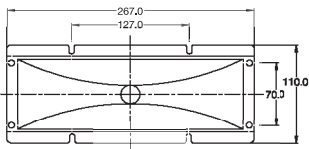
Size	110 X267	mm	4,3 X10,5 Inch
Rated Impedance	8	Ohm	
Resonance Frequency	547.9	Hz	
Power Handling Capacity	30	Watts	
Sensitivity 1W@1m	105.0	dB	
Operating Bandwidth	800 - 20000	Hz	
Nominal Coverage	(H x V) -5 dB,	100° X 80°	
Throat Diameter	25.00	mm	1 Inch
Recommended Crossover	2nd. Order or Higher		

THIELE -SMALL PARAMETERS

Resonance Frequency	Fs	547.9	Hz
DC Resistance	Re	7.3	
Mechanical Q Factor	Qms	6.297	
Electrical Q Factor	Qes	8.126	
Total Q Factor	Qts	3.548	
Voice - coil inductance @ 1KHz	Le	0.06	mH

PHYSICAL INFORMATION

Horn Material	Cast Aluminium
Finished	Paint Black
Diaphragm Material	Aluminium
Terminal	Plated Terminal
Mounting Type	Screw
Magnet	Ferrite
Voice Coil Material	CCA W
Net Weight	1,1 Kg (2,42Lb)
Gross Weight	1,4 kg (3,08Lb)
Packing Dimension WxLxH (mm)	230 X 310 X 115
	(9,05in X 12,2in X 4,52in)
	0,29 Cu.Ft.



PHT-416

HIGH FREQUENCY SUPER TWEETER

GENERAL SPECIFICATIONS

Description	High Frequency Compression Driver		
Size(in)	120 x 200	mm	4.7"x7.8" Inch
DC Resistance	8.7	Ohm	
Nominal Impedance	8	Ohm	
Resonance Frequency	1576	Hz	
Power Handling Capacity	40	Watts	
Sensitivity 1W@1m	100	dB	
Operating Bandwidth	1400 - 20000	Hz	
Throat Diameter	28,0	mm	1,1 Inch
Voice Coil Diameter	25,2	mm	0,99 Inch

PHYSICAL INFORMATION

Horn Material	A.B.S with Glass Filled Black Polycarbonate
Finished	Black Material
Magnet Type	Ferrite 8.0 oz
	Size ODxDxH (mm)
	80 X 40 X 12
	Titanium
	Plated Terminal
	Screw On
	Nomex
	Copper Wire
	Net Weight
	0.72 kg(1.58Lb)
	Gross Weight
	0.86 kg(1.89Lb)
Packing Dimension WxLxH (mm)	140 X 220 X 155
	(5.55in X 8.66in X 6.10in)

